



Cable Blaster USB

Owner's Manual

Version 1.0 – December 31, 2019

A&P
Electronics

Introduction

Thank you for purchasing the Cable Blaster USB from A&P Electronics! The Cable Blaster was originally designed in 2007 to address the inconvenience of connecting a laptop to on-board racing electronics. No more resting the laptop on the roof, climbing into tight racing seats, or tripping over long serial cables back to the trailer. The Cable Blaster provided a convenient wireless connection which allowed tuning and uploading programs in comfort.

The Cable Blaster USB is the next generation of the original design supporting USB 2.0 for today's modern racing electronics. All of the complicated wireless configuration is handled in the background providing hassle-free installation and operation. Enjoy the comfort of tuning and uploading from the comfort of your trailer!

Vehicle Mounting

The Cable Blaster USB is designed to handle the harsh conditions of the automotive racing environment. However, careful consideration regarding the installation will prolong the life of the unit. The unit should not be mounted in the engine compartment. Avoid locations with the possibility of oil, fuel, or water contacting the unit. Also, avoid locations in direct sunlight. Mounting the Cable Blaster USB on vibration absorbing dampeners is also recommended.

Power Connection

The Cable Blaster USB is compatible with battery voltages up to 24 volts. An 18" DC power cord is supplied with the Cable Blaster USB. The red wire should be connected to a switched battery positive (+), and the black wire should be connected to vehicle ground. An inline 2A fuse can be installed between the Cable Blaster and the positive power connection. The Cable Blaster USB should be connected to a power source that is independent of fuel and ignition power sources.

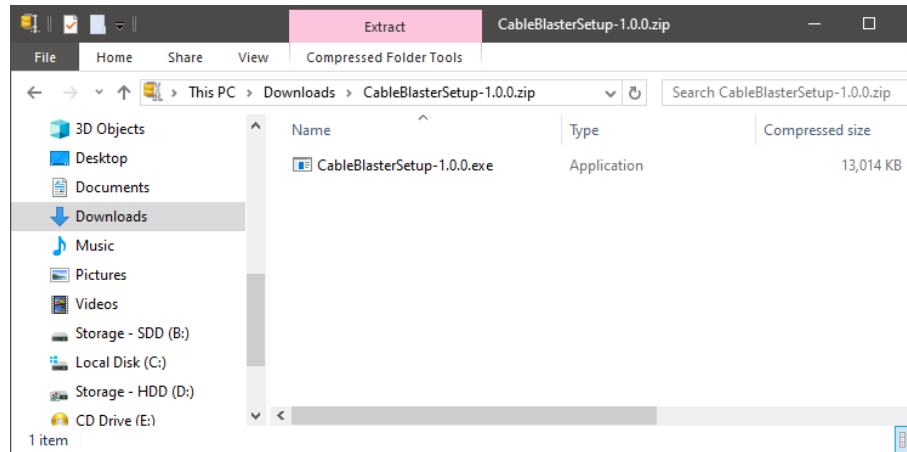
USB Connections

The Cable Blaster USB provides four (4) USB type A receptacles. Standard USB cables can be used to connect the on-board electronics to the Cable Blaster ports. It is recommended to secure the cables in the receptacles.

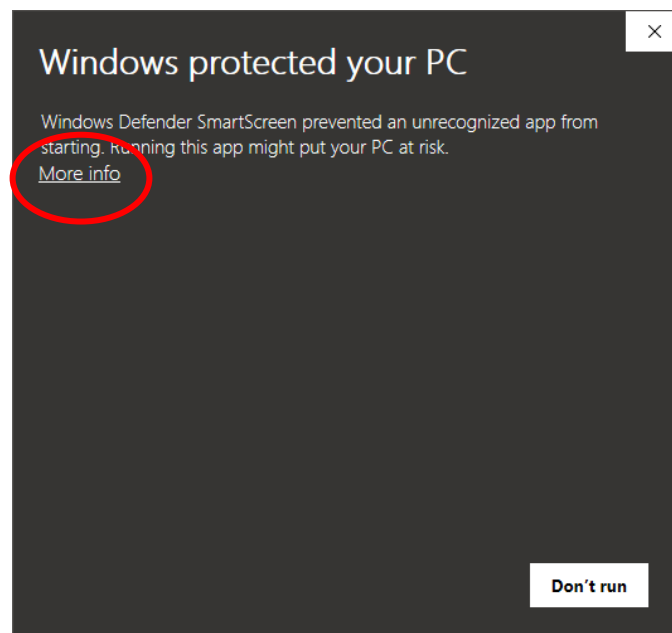
Software Installation

A small Windows software application runs on the PC or laptop to emulate the remote USB ports on the Cable Blaster. Installation steps are as follows:

1. Download the installation file at the A&P Electronics Cable Blaster [website](#). An executable file (exe) or zip file can be downloaded.
2. If the zip file was downloaded, it contains one executable file



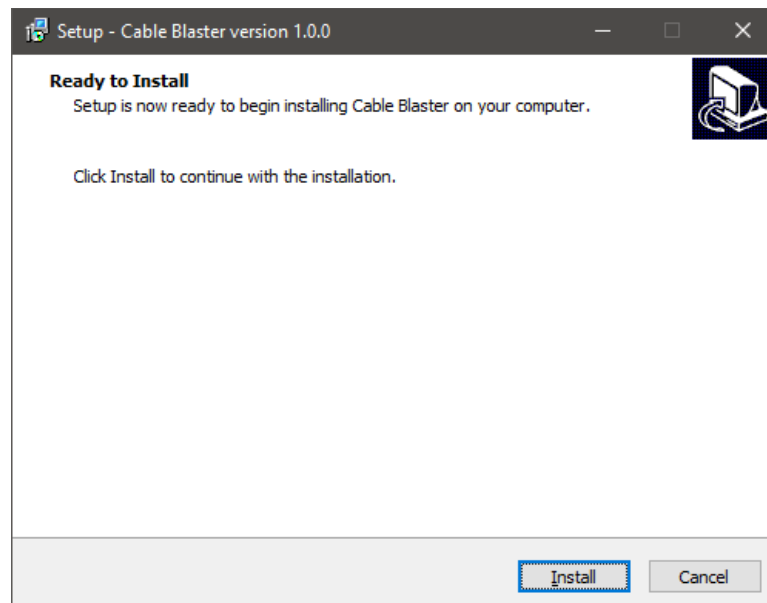
3. Double-click the executable file to run the setup application.
4. In some cases, Windows may display a protection screen as shown below due to a missing Microsoft digital signature. If so, press the "More info" link.



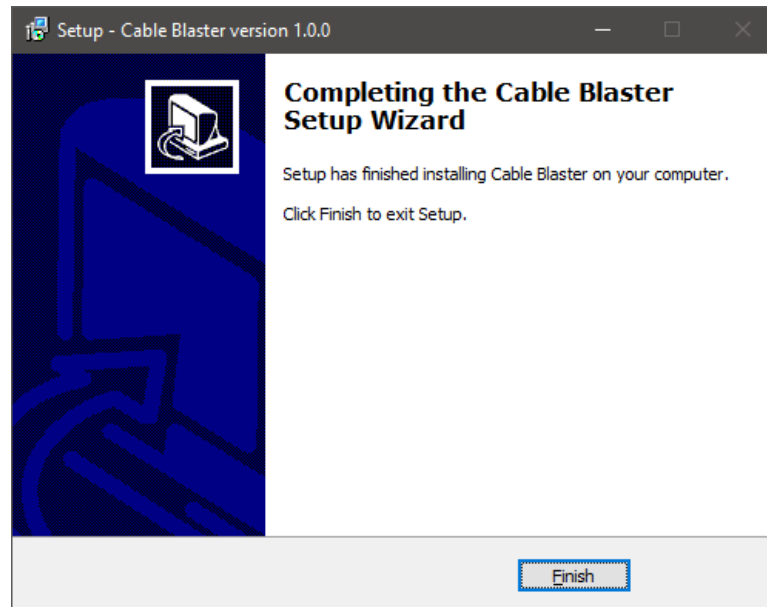
5. Now, press the “Run anyway” button.



6. The next popup may be a prompt by Windows User Account Control. If so, answer “Yes” to continue.
7. Click “Install”



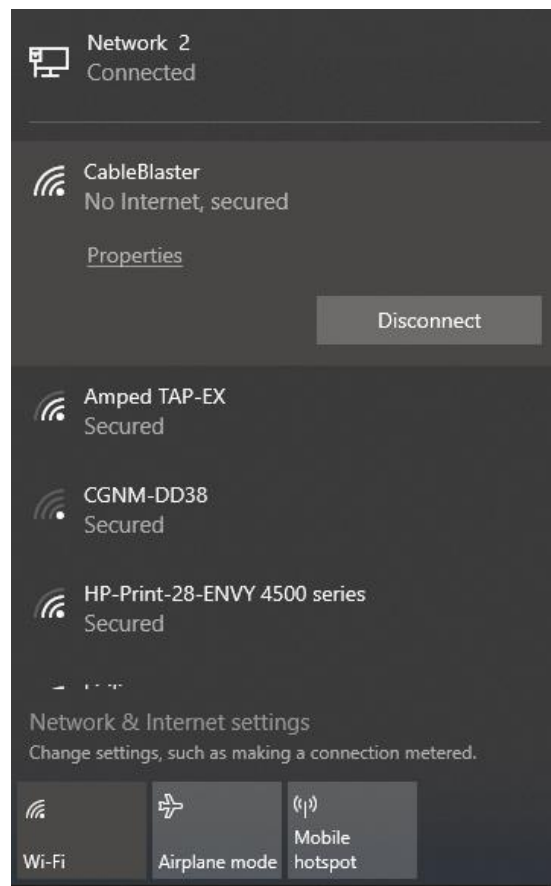
8. Click “Finish” when the setup program has completed.



9. The Cable Blaster client is now installed. There are no Start Menu icons for the client. If needed, the client can be uninstalled through the Windows Add & Remove Programs dialogue.

Wireless Configuration

The process for connecting to the Cable Blaster USB is the same as that of any ordinary wireless router or access point. With the Cable Blaster USB powered on, scan for new networks. The Cable Blaster network will appear on the list after the unit as booted (typically 15 seconds or less). When the network appears, enter security key which can be found printed on a label attached to the bottom of the unit. Each unit is pre-programmed with a random 13 character passphrase and encrypted using the WPA2 protocol. The passphrase is not adjustable. When connected, Windows will indicate “No Internet, secured”.



Operation

Operation of the Cable Blaster is straightforward. Apply power to the unit. Power on the on-board electronics (i.e. ignition, ECU, data logger, etc). Windows will automatically connect to the Cable Blaster wirelessly once it is detected. Shortly afterward, Windows will detect the USB devices in the vehicle. Afterwards, PC tuning applications will recognize the on-board electronics as if a physical USB cable was connected to the PC. All four ports can be accessed simultaneously.

Support

Should support be needed, an online forum has been established. Answers to questions can be found, or new questions asked. A&P Electronics engineering will monitor and answer questions time permitting. Additionally support may be obtained through your distributor. Contact them for more information.